

NOTE:
UTILIZE SPECIAL STILLING BASIN(S) AS
STILLING BASIN WHERE APPLICABLE.

NOTE:
ALL IN-STREAM WORK SHALL BE
PERFORMED IN THE DRY

DF18314.2045324

EC-05/CONST.04

NORTH CAROLINA
DEPARTMENT OF TRANSPORTATION
HENDERSON COUNTY

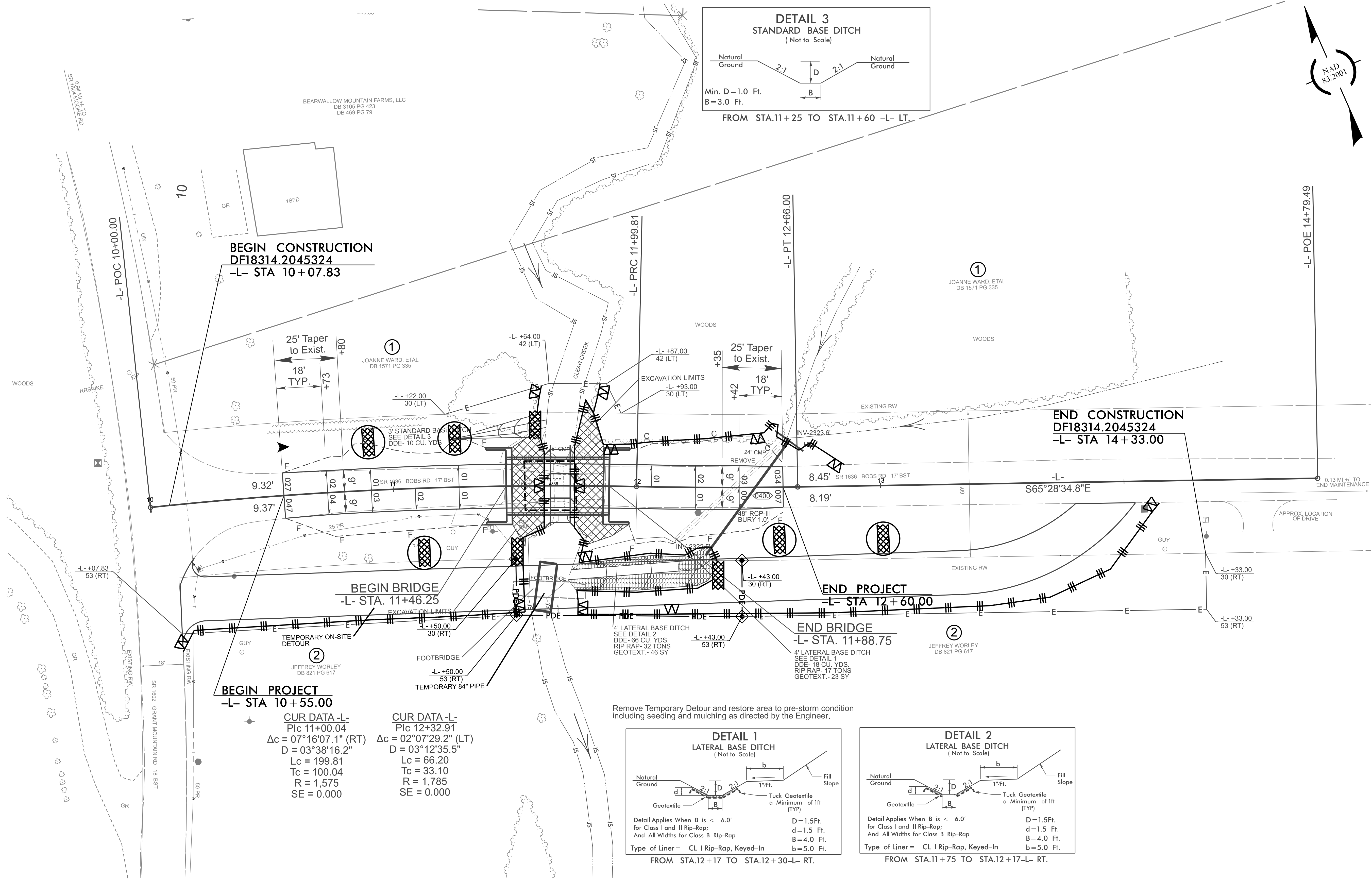
ROADWAY DESIGN UNIT
ROADWAY DESIGN
ENGINEER

HYDRAULICS
ENGINEER

PREPARED BY

TGS
TGS ENGINEERS
201 W. HANCOCK ST., STE. 200
SHREVEPORT, LA 70503
CORP. LICENSE NO. 17-C-0275

REVISIONS



Remove Temporary Detour and restore area to pre-storm condition including seeding and mulching as directed by the Engineer.

